

Buckingham Cattlemen's Association Weaned Feeder Calf Sale

Virginia Quality Assured Purple Tag Certified

****PICK UP LOCATION****

Buckingham Agricultural Resource Network (BARN)

11851 W. James Anderson Hwy, Buckingham, VA

Access Route 60 just west of Buckingham Courthouse via Route 24, 56, 20, and 15

Videos of Sale Cattle by Producer available at www.buckinghamcattlemensassociation.com

**Home bred and raised calves, intensive genetic program with growth bulls,
Tel-O-Auction, 6:00 PM
August 3, 2020**

**Obtain a bidder number and information from the Virginia Cattlemen's Association at (540) 992-1009
Tel-O-Auction number: 1(800) 309-2350 * Code: 4505513#**



Birthdates provided, September 1 and December 31, 2019

*Few in late August

September and early October calves AI sired by:



Sire	Yearling wt	Docity	Carcass weight	Marbling	Ribeye area	fat
Reserve	+92	+22	+26	+.76	+.77	-.038
Palmetto	+118	+28	+45	+1.02	+.72	+.007
Hickok	+112	+33	+45	+.68	+.75	+.029
Impact's Fortune	+113	+14	+19	+.08	+.65	-0.08

GRADING INFORMATION

Feeder Cattle

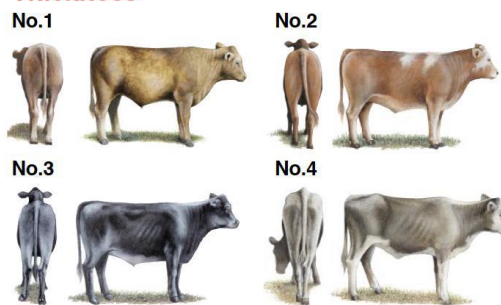
Official U.S. Grades

Frame Size



Large and medium frame pictures depict minimum grade requirements. The small frame picture represents an animal typical of the grade.

Thickness



No. 1, No. 2 and No. 3 thickness pictures depict minimum grade requirements. The No. 4 picture represents an animal typical of the grade.

Copies of the Official United States Standards for Feeder Cattle are available upon request

USDA United States Department of Agriculture Agricultural Marketing Service Livestock and Seed Program Washington, D.C. 20250 October 2009

Large framed cattle are those that are expected to weigh over 1250lbs. when their external fat is approximately 0.5 inches. at the 12th rib where beef carcasses are “ribbed” for grading purposes. The 0.5-inch target is used in the USDA standards as a reasonable live animal predictor for a calf’s ability to grade choice or higher.

GRADE	STEER (LBS)	HEIFER (LBS)
LARGE (L)	1250 OR greater	1150 or greater
MEDIUM (M)	1100 TO 1249	1000 TO 1149

Stag Guarantee: Any steer found to be a stag within 90 days of the delivery date, buyer will be refunded \$250.

Heifer Guarantee: If a Buyer purchases a heifer that happens to be bred, the producer agrees to refund \$300 to the purchaser. This is subject to a veterinarian's certification that the heifer is pregnant and the returned ear tag verifying the identification and farm of origin.

Health Program:

All calves Double Vaccinated with Zoetis Animal Health products:
Bovi-Shield Gold 5/One Shot (Modified Live) for IBR, PI3, BVD
7-Way Clostridal (Ultrabac 7) and Dewormed

All Producers are BQA Certified

Contact: Jennifer Ligon (434) 607-5814 or Roger Morris (434) 315-4294

STEERS

Lot 1	85 head Steers	Total Weight	48,000-50,000
	<p>6 L1, 58 M1, 21 L&M2 80 Black, 3 BWF, 1 SMK, RED Average Weight: 585 lbs Range: 550-610 Flesh: 10% 4s and 90% 5s Clean few 1's Feed: 8 lbs grain, free choice hay and pasture Sires: Angus, Angus X Wt. Conditions: 30-mile haul to the BARN weighed and loaded FOB the BARN.</p>		
			**August 6 take up **
Lot 2	80 head Steers	Total Weight	48,000-50,000
	<p>19 L1, 41 M1, 20 L&M2 46 Black, 31 BWF, 1 RWF, 2 Black-nose CX Average Weight: 620 Range: 550-750, 1 @900 Flesh: 20% 4s, 70% 5s Clean, few 1s Feed: Ave. 8-10 lbs grain, free choice hay and pasture Sires: Angus, Angus X, few Balancer</p>		
			1 Owner Load
	<p>Crooked Creek Farms: Manager Rodney Womack 434-665-1929 Wt. Conditions: Loaded FOB farm, 12-mile haul to Rock Quarry, Charlotte. 2% Shrink</p>		
			*Naturals and GAP certified
			No August 5,6,7 take-up
Lot 3	79 head Steers	Total Weight	48,000-50,000
	<p>7 L1, 56 M1, 16 L&M2 62 Black, 16 BWF, 1 Black-nose CX Average Weight: 625 Range: 550-700 Flesh: 10 % 4s and 90% 5s Clean, few 1s Feed: Ave. 10 lbs grain, free choice hay and pasture Sires: Angus, Angus X Brooklyn Road Farm: Manager Michael Randolph 434 547-3010 Sweet Springs Farm: Jim Pugh 434-610-7265 Wt. Conditions: 10 and 50-mile haul to the BARN weighed and loaded FOB the BARN.</p>		
			2 Owner Load
			**August 5 take up **
Lot 4	78 head Steers	Total Weight	48,000-50,000
	<p>7 L1, 70 M1, 1 L&M2 72 Black, 5 BWF, 1 Black-nose CX Average Weight: 640 Range: 600-665 Flesh: 10% 4s, 90% 5s Clean few 1's Feed: Ave. 8-10 lbs 14% grain, free choice hay, pasture Sires: Angus, Angus X Wt. Conditions: 30-mile haul to the BARN weighed and loaded FOB the BARN.</p>		
			**August 6 take up **

Lot 5	74 head Steers	Total Weight	48,000-50,000
	7 L1, 64 M1, 3 L&M2 72 Black, 2 BWF Average Weight: 670 Flesh: 90% 5s, 10% 6s Feed: Ave. 5-10 lbs grain, free choice hay and pasture Sires: Angus, Angus X, Balancer Berk Mar Farm, Creekview, Evergreen, High Bridge Contact: Brett Stratton of Evergreen Farm: 434 610-7625 Wt. Conditions: 40-mile haul to the BARN weighed and loaded FOB the BARN.		
			4 Owner load
		Range: 610-730	**No August 5,6,7 take-up**
		Clean few 1's	
Lot 6	74 head Steers	Total Weight	48,000-50,000
	14 L1, 59 M1, 1 L&M 2 73 Black, 1 BWF Average Weight: 675 Flesh: 20% 4s, 80% 5s Feed: Ave. 8 lbs grain, free choice hay and pasture Sires: Angus, Angus X, Balancer Randy Wilmoth of Wilmoth Farms: 434 989-1381 Wt. Conditions: Loaded FOB the farm, 17-mile haul to Mead-Westvaco Scales North of Dillwyn. 2% Shrink.		
			1 Owner Load
		Range: 550-720, 1 @800	
		Clean, few 1s	** No Aug. 5,6,7 take up**
Lot 7	71 head Steers	Total Weight	49,000-50,800
	9L1, 61 M1, 1 L&M2 66 Black, 2 BWF, 3 Black-nose CX Average Weight: 695 Flesh: 100% 5s Feed: 8-10 lbs grain, free choice hay and pasture Sires: Angus, Angus X Wt. Conditions: 30-mile haul to the BARN weighed and loaded FOB the BARN.		
		Range: 650-750	**August 6 take up **
		Clean, few 1s	
Lot 8	69 head Steers	Total Weight	48,000-50,000
	29 L1, 39 M1, 1 L&M2 66 Black, 3 BWF Average Weight: 715 Flesh: 100% 5s Feed: Ave 8-10lbs grain, free choice hay Sires: Angus, Gelbvieh X, Balancer Wt. Conditions: 20/40-mile haul to the BARN weighed and loaded FOB the BARN.		
		Range: 675-770	**August 5 take up**
		Clean few 1's	

Lot 9	67 head Steers	Total Weight	48,000-50,000
	<p>7 L1, 60 M1 *1 Owner Load*</p> <p>65 Black, 1 BWF, 1 Black-nose CX</p> <p>Average Weight: 735 Range: 675-790</p> <p>Flesh: 10% 4s, 90% 5s Clean: 1S, few 0s</p> <p>Feed: 5 lbs grain, free choice hay and pasture</p> <p>Lin Jones of Berk Mar Farm: 434 581-3997, 434 981-5424</p> <p>Wt. Conditions: Loaded FOB the farm, 12-mile haul to Mead-Westvaco Scales North of Dillwyn. 2% Shrink. **NO August 5,6,7 take up**</p>		
Lot 10	65 head Steers	Total Weight	48,000-50,000
	<p>6L1, 59 M1 *1 Owner Load*</p> <p>43 Black, 20 BWF, 2 RED</p> <p>Average Weight: 765 Range: 710-800</p> <p>Flesh: 80% 5s, 20% 6s Clean</p> <p>Feed: 10 lbs grain, free choice hay and pasture *Naturals</p> <p>Sires: Angus, Angus X, Gelbvieh, Balancer</p> <p>Brett Stratton of Evergreen Farms: 434-610-7625</p> <p>Wt. Conditions: 25-mile haul Lynchburg Livestock Market weighed and loaded FOB the market. **Schedule Take up**</p>		
Lot 11	63 head Steers	Total Weight	48,000-50,000
	<p>6L1, 57 M1 *1 Owner Load*</p> <p>63 Black</p> <p>Average Weight: 780 Range: 735-840</p> <p>Flesh: 90% 5s, 10% 6s Clean</p> <p>Feed: 10 lbs grain, free choice hay and pasture</p> <p>Sires: Angus, Balancer</p> <p>Robert Womack of Woodville Farm: 434 547-9611</p> <p>Wt. Conditions: Loaded FOB the Farm 10-mile haul to Taylor Motor Scales, Cumberland 2% Shrink **NO August 5,6,7 take up**</p>		
Lot 12	61 head Steers	Total Weight	48,000-50,000
	<p>16 L1, 44 M1, 1 L&M2</p> <p>58 Black, 3 BWF</p> <p>Average Weight: 805 Range: 740-860, 3@950</p> <p>Flesh: 100% 5s Clean</p> <p>Feed: Ave. 8-10 lbs grain, free choice hay and pasture</p> <p>Sire: Angus, Angus X</p> <p>Wt. Conditions: 20/40-mile haul to the BARN weighed and loaded FOB the BARN. **August 5 take up**</p>		

Lot 13	61 head Steers	Total Weight	48,000-50,000
	5L1, 56 M1 51 Black, 9 BWF, 1 black-nose CX Average Weight: 810 Flesh: 80% 5s, 20% 6s Feed: 8 lbs grain, free choice hay and pasture Sires: Angus X, Balancer, Gelbvieh Bob Martin of Creek View Farms: 434-610-0411 Wt. Conditions: 30-mile haul Lynchburg Livestock Market weighed and loaded FOB the market.		
		1 Owner Load	*Naturals*
		Range: 720-890	**Schedule Take up**
		Clean	
Lot 14	61 head Steers	Total Weight	48,000-50,000
	16 L1, 40 M1, 2 L&M2 47 Black, 11 BWF Average Weight: 810 Flesh: 100% 5s Feed: 12 lbs grain, free choice hay and pasture Sires: Angus, Angus X Brooklyn Road Farm: Manager Michael Randolph 434 547-3010 Wt. Conditions: Loaded FOB farm, 5-mile haul to Mead-Westvaco Scales North of Dillwyn. 2% Shrink.		
		1 Owner Load	**NO August 5,6,7 take up**
		Range: 725-880, 2@925	
		Clean, few 1s	
		*Some pink eye spots	
Lot 15	60 head Steers	Total Weight	48,000-50,000
	11 L1, 49 M1 58 Black, 2 BWF Average Weight: 825 Flesh: 100% 5s Feed: 5-10 lbs grain, free choice hay and pasture Sires: Angus, Balancer Berk Mar Farm and High Bridge Farm Contact: Lin Jones of Berk Mar Farm: 434 581-3997, 434 981-5424 Wt. Conditions: 40-mile haul to the BARN weighed and loaded FOB the BARN.		
		*2 Owner Load	**Schedule Take up**
		Range: 765-880, 4@940	
		Clean, few 1s	
Lot 16	58 head Steers	Total Weight	31,000-33,000
	31 L1, 27 M1 51 Black, 4 BWF, 3 Black-nose CX Average Weight: 855 Flesh: 100% 5s Feed: Ave. 8-10 lbs grain, free choice hay and pasture Sires: Angus, Gelbvieh Wt. Conditions: 20/40-mile haul to the BARN weighed and loaded FOB the BARN.		
		Range: 795-900, 1@990	**August 5 take up**
		Clean few 1's	

Lot 17	58 head Steers	Total Weight	48,000-50,000
	14 L1, 44 M1 38 Black, 19 BWF, 1 RED Average Weight: 850 Flesh: 80% 5s, 20%6s Feed: 10 lbs grain, free choice hay and pasture Sires: Angus, Balancer Brett Stratton of Evergreen Farms: 434-610-7625 Wt. Conditions: 25-mile haul Lynchburg Livestock Market weighed and loaded FOB the market. *1 Owner Load **Schedule Take up**		
Lot 18	54 head Steers	Total Weight	26,000-28,000
	4 L1, 29 M1, 21 L&M 2s 53 Black, 1 Black-nose CX Average Weight: 515 Flesh: 100% 5s Feed: Ave. 8-10 lbs grain, free choice hay and pasture Sires: Angus, Angus X, Gelbvieh Wt. Conditions: 20/40-mile haul to the BARN weighed and loaded FOB the BARN. Range: 450-545 Clean few 1's **August 6 take up**		
HEIFERS			
Lot 19	88 head Heifers	Total Weight	26,000-28,000
	6 L1, 53 M1, 29 L&M2 69 Black, 19 BWF Average Weight: 560 Flesh: 70% 4s, 30% 5s Feed: Ave. 8 lbs grain, free choice hay and pasture Sires: Angus, Angus X Grind-N-Stone (Clark Poindexter 434-660-7530) and Crooked Creek Farms: Manager Rodney Womack 434-665-1929 Wt. Conditions: Loaded FOB farm, 12-20 mile haul to Rock Quarry, Charlotte. 2% Shrink *2 Owner Load* ** Naturals Range: 475-620 Clean few 1's **No August 5,6,7 take-up**		

Lot 20	85 head Heifers	Total Weight	48,000-50,000
	6 L1, 60 M1, 19 L&M2 80 Black, 5 BWF Average Weight: 585 Flesh: 10% 4s, 90% 5s Feed: Ave. 5-10 lbs grain, free choice hay and pasture Sires: Angus, Angus X Wt. Conditions: 40/60-mile haul to the BARN weighed and loaded FOB the BARN.		
		Range: 560-610 Clean few 1's	** August 7 take up**
Lot 21	77 head Heifers	Total Weight	48,000-50,000
	3 L1, 33 M1, 33 L&M2 61 Black, 13 BWF, 3 RWF Average Weight: 635 Flesh: 100% 5s Feed: Ave 8-10lbs grain, free choice hay and pasture Sires: Angus, Angus X, Balancer Brooklyn Road Farm: Manager Michael Randolph 434 547-3010 Wt. Conditions: Loaded FOB farm, 5-mile haul to Mead-Westvaco Scales North of Dillwyn. 2% Shrink.		
		1 Owner Load Range: 500-700, 1 @790 Clean few 1s	**NO August 5,6,7 take up**
Lot 22	78 head Heifers	Total Weight	48,000-50,000
	5 L1, 65 M1, 8 L&M2 68 Black, 9 BWF, 1 Black nosed CX Average Weight: 635 Flesh: 100% 5s Feed: Ave. 5-12 lbs grain, free choice hay and pasture Sires: Angus, Balancer, Gelbvieh Wt. Conditions: 20/40-mile haul to the BARN weighed and loaded FOB the BARN.		
		Range: 590-660 Clean few 1s	**August 7 take up**
Lot 23	78 head Heifers	Total Weight	48,000-50,000
	12L1, 61 M1, 5 L&M2 76 Black, 1 BWF, 1 black nose CX Average Weight: 640 Flesh: 100% 5s Feed: Ave. 5-10 lbs grain, free choice hay and pasture Sires: Angus, Balancer		
		Replacement Quality *1 Owner Load* Range: 550-720, 1 @870 Clean	*Naturals One Freemartin
	Berk Mar Farm Contact: Lin Jones of Berk Mar Farm: 434 581-3997, 434 981-5424. Wt. Conditions: Loaded FOB the farm, 12-mile haul to Mead-Westvaco Scales, 2% Shrink.		
			NO August 5,6,7 take up

Lot 24	72 head Heifers	Total Weight	48,000-50,000
	3 L1, 68 M1, 3 L&M2 62 Black, 10 BWF Average Weight: 680 Flesh: 80% 5s, 20% 6s Feed: Ave. 10 lbs grain, free choice hay and pasture Sires: Angus, Balancer Evergreen Farms and Creek View Farms: Contact: Brett Stratton 434-610-7625. Wt. Conditions: 25-mile haul Lynchburg Livestock Market weighed and loaded FOB the market.	**Replacement Quality** *2 Owner Load Range: 615-750 Clean few 1s *Naturals **Schedule Take up**	
Lot 25	71 head Heifers	Total Weight	48,000-50,000
	13 L1, 55 M1, 3 L&M 2s 68 Black, 3 BWF Average Weight: 695 Flesh: 90% 5s, 10% 6s Feed: Ave. 5-8 lbs grain, free choice hay and pasture Sires: Angus, Gelbvieh, Balancer Wt. Conditions: 20/40-mile haul to the BARN weighed and loaded FOB the BARN.	**Replacement Quality** Range: 665-780, 1 @ 820 Clean 1 Freemartin **August 7 take up**	
Lot 26	70 head Heifers	Total Weight	48,000-50,000
	15 L1, 48 M1 70 Black Average Weight: 705 Flesh: 100% 5s Feed: Ave. 8-10 lbs grain, free choice hay and pasture Sire: Angus, Balancer Robert Womack of Woodville Farm: 434 547-9611 Wt. Conditions: Loaded FOB the Farm 10-mile haul to Taylor Motor Scales, Cumberland 2% Shrink	*1 owner load* Range: 615-770, 1 @ 830 Clean **NO August 5,6,7 take up**	
Lot 27	67 head Heifers	Total Weight	20,000-22,000
	1 L1, 33 M1, 33 L&M2 65 Black, 2 BWF Average Weight: 510 Flesh: 20% 4s, 80% 5s Feed: Ave. 5-12 lbs grain, free choice hay and pasture Sires: Angus, Balancer, Gelbvieh Wt. Conditions: 20/40-mile haul to the BARN weighed and loaded FOB the BARN.	*Half load Range: 450-550 Clean few 1s *Majority Wilmoth cattle **August 7 take up**	